



EVENTURE DOMES

Space Without Limits

Our tent structures can be recognized by their distinctive and contemporary design, the round shapes, and robust tubular structure. Every tent is made out of high-quality aluminum tubes, strong galvanized steel connectors, and stainless steel cables to ensure extra strength and rigidity. All structures are customizable, all-weather proof, TÜV certified, sustainable, long-lasting, low maintenance, and fast and easy to install.



LOUNGER M | 183sf

- ⌚ 2 Person setup in just 20 minutes.
- 📦 Comes in one transport box, 170 kg (excl. cover).
- 👤 Holds up to 34 standing or 11 seated guests.

Call For Quote

Dimensions (outside)



CROSSOVER M | 409sf

- ⌚ 3 Person setup in just 45 minutes.
- 📦 Comes in one transport box, 315 kg (excl. cover).
- 👤 Holds up to 76 standing or 25 seated guests.

Call For Quote

Dimensions (outside)



HEXADOME M | 1076sf

- ⌚ 3 Person setup in just 120 minutes.
- 📦 Comes in two transport boxes, 673 kg (excl. cover).
- 👤 Holds up to 200 standing or 66 seated guests.

Call For Quote

Dimensions (outside)



LOUNGER L | 280sf

- ⌚ 2 Person setup in just 20 minutes.
- 📦 Comes in one transport box, 190 kg (excl. cover).
- 👤 Holds up to 52 standing or 17 seated guests.

Call For Quote

Dimensions (outside)



CROSSOVER L | 732sf

- ⌚ 2 Person setup in just 75 minutes.
- 📦 Comes in one transport box, 413 kg (excl. cover).
- 👤 Holds up to 136 standing or 45 seated guests.

Call For Quote

Dimensions (outside)



HEXADOME L | 1884sf

- ⌚ 4 Person setup in just 150 minutes.
- 📦 Comes in two transport boxes, 1,625 kg (excl. cover).
- 👤 Holds up to 350 standing or 116 seated guests.

Call For Quote

Dimensions (outside)



CUSTOMIZABLE

Customize your tent with a full-color print or logo. Even the frame tubes are available in any RAL color!

COMPACT TRANSPORT & STORAGE

Most tent structures fit into just one transport box (excluding the cover). Easy to store, transport and handle!

FAST & EASY INSTALATION

All our tent structures are designd for fast, easy set up. Install in just 20 to 150 minutes, depending on the size!

CONNECTABLE

By using gutters, structures can be connected infinitely.

FITS ON LAYHER STAGE

Our tent structures seamlessly intergrate with layher stages. Perfect for creating covered, weather-proof stages.

MOUNTING

Mount devices up from 400 kg to 1,200 kg via center hooks or M10 screws in each corner. Ideal for lights, speakers, TVs & more.

CLOSEABLE

Our structures can by closed by using sidewalls. Sidewalls are available with window, door, both or plain.

SUSTAINABLE

The tents feature a robust, lightweight aluminium frame and durable cover, ensuring long-lasting use with minimal wear, less replacement and years of reuse.

FIRE RETARDANT

Choose your tent cover: Airtex white® or Stam 6002®. Both are B1-M2 fire retardant, offering extra safety without compromising durability.

EXTREME WEATHER RATED

TÜV certified
Storms up to 80/100 km/h (=50 mph)
-20/-30 °C (-22 °F)
-70 °C (158 °F)



CREATIVE FURNITURE

Creative Furniture is more than just furniture. It is innovative, stylish, and practical. Its unique click system allows quick setup by one or two people. With custom logo options, the pieces become powerful branding tools. A smart transport box ensures easy storage and mobility, making it perfect for temporary or semi permanent use at events, exhibits, or business spaces.

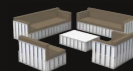


LOUNGE BOX

Call For Quote

⌚ 1 Person setup in just 10 minutes.

📦 1 Transportbox of 355 kg incl. cushions 120x100x185 cm



👥 1 Box offers multiple setups for 12 to 15 persons

U BAR BOX

Call For Quote

⌚ 1 Person setup in just 10 minutes.

📦 1 Transportbox of 308 kg 120x100x135 cm

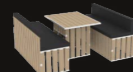


HIGH SEATS BOX

Call For Quote

⌚ 1 Person setup in just 10 minutes.

📦 1 Transportbox of 355 kg incl. cushions 120x100x185 cm



👥 4 Persons

OUR DECKING SYSTEM

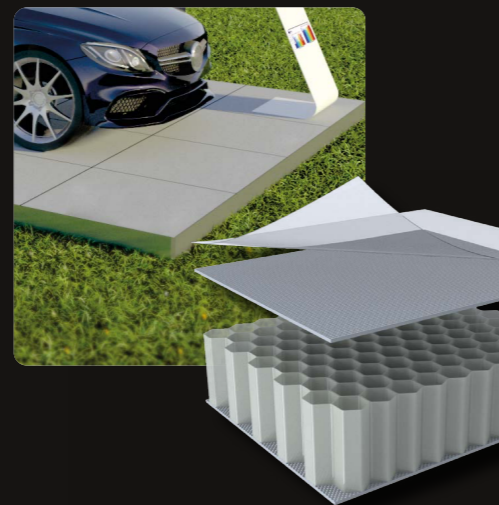
Meet our Decking – a sleek, sturdy outdoor floor built for any event setup. Use it as a terrace, stage, or catwalk, and connect it seamlessly to our Structures for both flooring and ballast. Height-adjustable, TÜV certified, and all-weather proof. Install fast and handle heavy loads with ease. One compact system, endless possibilities.



DECKING

Call For Quote

🔒 The sturdy design ensures that the decking will bear heavy loads up to 1.200 kg per m² and more using extra support in the frame.



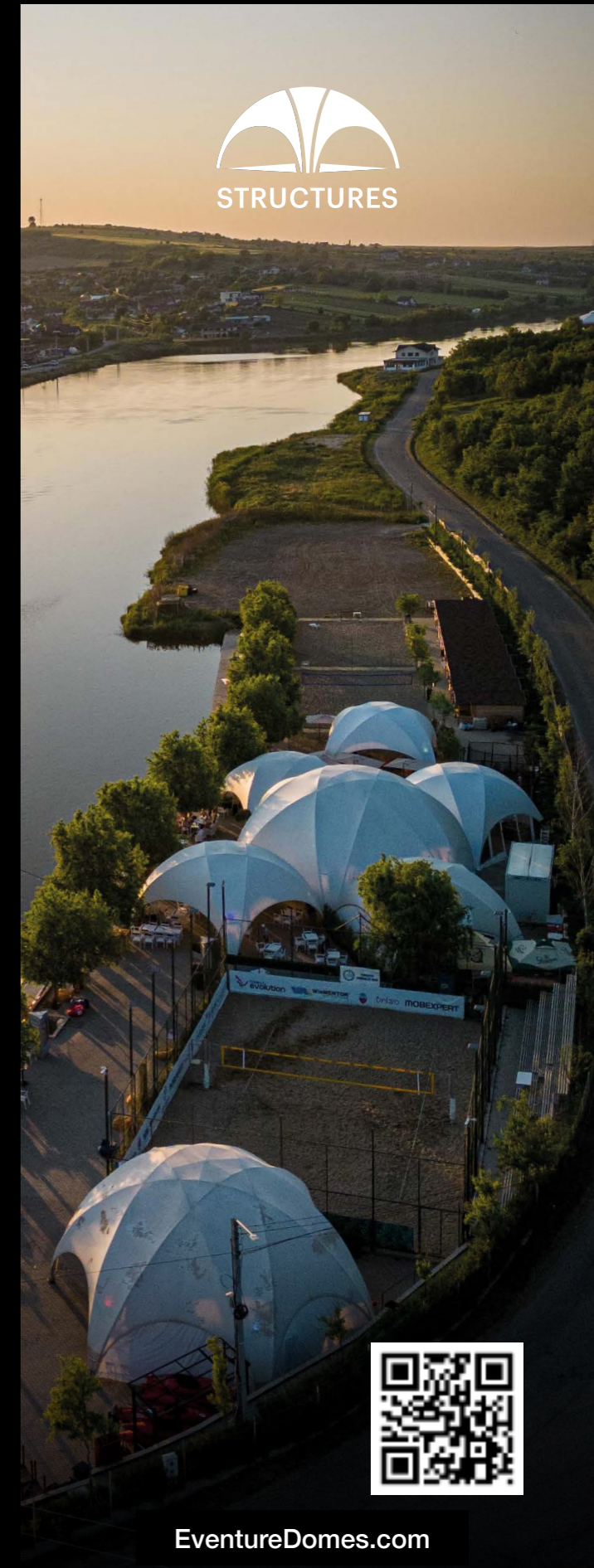
ABOUT EVENTURE DOMES:

As the exclusive partner for EJH Distribution, our Spokane-based company is dedicated to redefining the regional event landscape. We specialize in the sales and leasing of world-class tent structures, flooring, and furniture, bringing a global standard of design and safety to the hospitality and leisure industries of the PNW. Led by a team of four passionate founders, we bridge the gap between international innovation and local expertise to help brands create unforgettable outdoor environments. From high-profile festivals to boutique corporate gatherings, and weddings, we provide the distinctive, high-quality products necessary to elevate every space we touch.



CONTACT:

1846 1st Street Suite 100
Idaho Falls, ID 83401-4415
208.278.8499
EventureDomes.com
Derik@EventureDomes.com



EventureDomes.com